



Victorian Gorse Taskforce
Progress Report



2013/14

Victorian Gorse Taskforce Progress Report 2013/14

Acknowledgements: The VGT wishes to acknowledge the support received from the State Government of Victoria through the Department of Environment and Primary Industries that has assisted in producing this document.

Published and Authorised by: The Victorian Gorse Taskforce, October 2014

Designed by: Small Dog Design,
101-107 Albert Street, Ballarat Vic 3350
Tel 03 5333 7777

Disclaimer: Every effort has been made to ensure that the information in this document is accurate. The Victorian Gorse Taskforce does not guarantee that the publication is without flaw of any kind and therefore disclaims all liability for any error, loss or other consequence that may arise from relying on any information contained within.

Enquiries: VGT Executive Officer, Department of Environment and Primary Industries,
402-406 Mair Street, Ballarat Vic 3350

www.vicgorsetaskforce.com.au

Contents

Chairperson's Report	5
Background	6
On-Ground Gorse Control Projects 2013/14	8
Facilitated 'Action Group' Projects	8
Small Grants Program	17
Income and Expenses	20
Gorse Control Project Target Areas 2013/14	21
Appendix 1 – VGT members 2013/14	22







Victorian Gorse Taskforce

Chairperson's Report

On behalf of the Victorian Gorse Taskforce (VGT) I am pleased to present the 2013/14 progress report.

During 2014 the taskforce was very pleased to commission a new strategy that will guide our work for the period 2014 to 2019. This strategy will further advance our support of community-led action in the ongoing battle of gorse control. Although there is still much more work to do we are proud of the goals achieved during the period of the previous strategy document, 2008 to 2013. We have successfully coordinated the establishment of both large and small community based gorse control projects that have put the spotlight on the importance of community ownership and partnerships with all land managers. The new Victorian Gorse Taskforce Strategy document is now available.

There is a deliberate focus on initiating projects in those areas where there is community will and commitment to do something about the problem. Some of our larger projects are centred around Ballarat in the communities of Napoleons/Garibaldi, Snake Valley, Miners Rest and Invermay. Each of these projects are controlled via a locally based steering committee, creating project ownership within the local community. The projects include private and public land managers and have the services of a paid project officer to negotiate control work with landholders. These projects are a significant investment for the taskforce and support communities to take action and manage gorse in the longer term. During 2013/14 the taskforce also supported large efforts at Staffordshire Reef, Inverleigh and Lal Lal.

The taskforce supported 6 smaller projects (\$5,000 or less invested) during 2013/14. These projects have provided an opportunity for smaller community groups to access funds to support landholders efforts in controlling smaller or more isolated gorse infestations. The taskforce commissions these projects during an open call application process. Generally we do this each winter and aim to continue to run this small grants process into the future.

The Victorian State Government has continued its support of the taskforce. During 2013/14 the taskforce was fortunate to be able to negotiate funding of \$130,000. The majority of this has been sent to new projects. The State Government funding received also allows us to contribute to the salary of our Executive Officer who continues to be employed through the Department of Environment and Primary Industries (DEPI). We have an excellent working relationship with the DEPI.

This year we have continued to build a network of project officers. These people are actively facilitating long term gorse control by asking land managers to sign up to 3 year voluntary agreements, and in a small number of cases where this approach might fail we are working towards negotiating with DEPI for regulatory support. We continue to form and refine our very beneficial partnerships with both private and public land managers, particularly with local Councils. It is pleasing to see many Councils become active in completing roadside gorse control within our project areas.

The many people that volunteer their time on the committee are to be commended and I thank them all for their support during the time that I have been Chair. To the many landholders, volunteers, public land managers and those providing coordination and facilitation thank-you for your efforts. These committed people make the taskforce what it is and all put in immeasurable time in promoting the gorse control message. I have personally seen the results of committed community groups and individuals and have been impressed by their willingness to continue with their efforts in the long term. Many do this work without any financial assistance. This is the sort of program that is needed to beat this curse; a one off effort does not work, the control and eradication of gorse requires an ongoing commitment.

Please take the time to read about the achievements of the various projects that the taskforce has funded within this report.

Peter Everist
Chair – Victorian Gorse Taskforce

Background

The primary role of the VGT is to oversee the implementation of the Victorian Gorse Control Strategy 2014-2019.

The nine principal Goals and Key Directions of the strategy are as follows:

1 Provide leadership in community-led invasive plant control

The VGT coordinates and implements the Victorian Gorse Control Strategy (VGCS) across Victoria. In doing so the VGT makes a valuable contribution to preventing the spread of gorse and developing the community-led invasive plant control model.

2 Achieve an accurate knowledge of the extent and threat of gorse in Victoria

Knowledge of the extent of gorse distribution, including 'clean' areas, provides the basis for effective planning and delivery of control programs. Accurate mapping of the extent of gorse distribution is an important management and education tool. The DEPI Biosecurity and GIS teams provide important support in this area.

3 Promote Best Practice Management for gorse control in Victoria

Gorse control and site rehabilitation is effective and efficient, using Best Practice Management methods.

4 Prevent the spread of gorse into new areas of the state

The VGT places an emphasis on programs in the areas of the state that are at risk from invasion by gorse, where the focus will be on prevention of spread activities, partnership development, community capacity building and, where necessary, enforcement.

5 Achieve a reduction in the core infestations of gorse across Victoria

Ongoing programs are aimed at protecting key community assets where these are prioritised through regional catchment strategies and regional invasive plant and animal management strategies, and within core infestations.

6 Reduce infestations and the spread of gorse in and along corridors

The VGT and facilitators will work with the community and linear reserve managers in focus areas to reduce the spread of gorse in and along corridors.

7 Increase the community's capacity to be actively engaged in long-term gorse control

Communities are empowered to act and are committed to the long-term control of gorse, and are supported to do so.

8 Ensure communities are aware of their statutory obligations to control gorse

Communities are aware of their statutory responsibilities and the VGT will work with partners to advocate that, where necessary, enforcement complements community-led action.

9 Ensure effective monitoring and reporting of the Victorian Gorse Control Strategy

The implementation of the VGCS is monitored, and stakeholders and the community are informed of its progress.



Focus Areas

To provide strategic direction for the control of gorse throughout Victoria, the state is divided into two focus zones (see Figure 1) considering principles of invasive plant control and mapping of present and predicted gorse occurrence (reference *Victorian Gorse Control Strategy 2014-2019*).

Reduction Zone

The Reduction Zone is the part of Victoria where substantial, scattered but not yet widespread and abundant populations of gorse occur. In this zone the Strategy aims to reduce populations (shaded orange on Gorse Control Areas map).

Eradiation and Prevention Zone

The Eradiation and Prevention Zone is the part of Victoria where gorse may already occur as isolated infestations or is predicted to occur based on potential distribution modelling (shaded green on Gorse Control Areas map).

Whilst this Strategy focuses on partnership development, capacity building and compliance, it will support eradication of isolated infestations where feasible. Prevention of gorse incursions will be the priority.

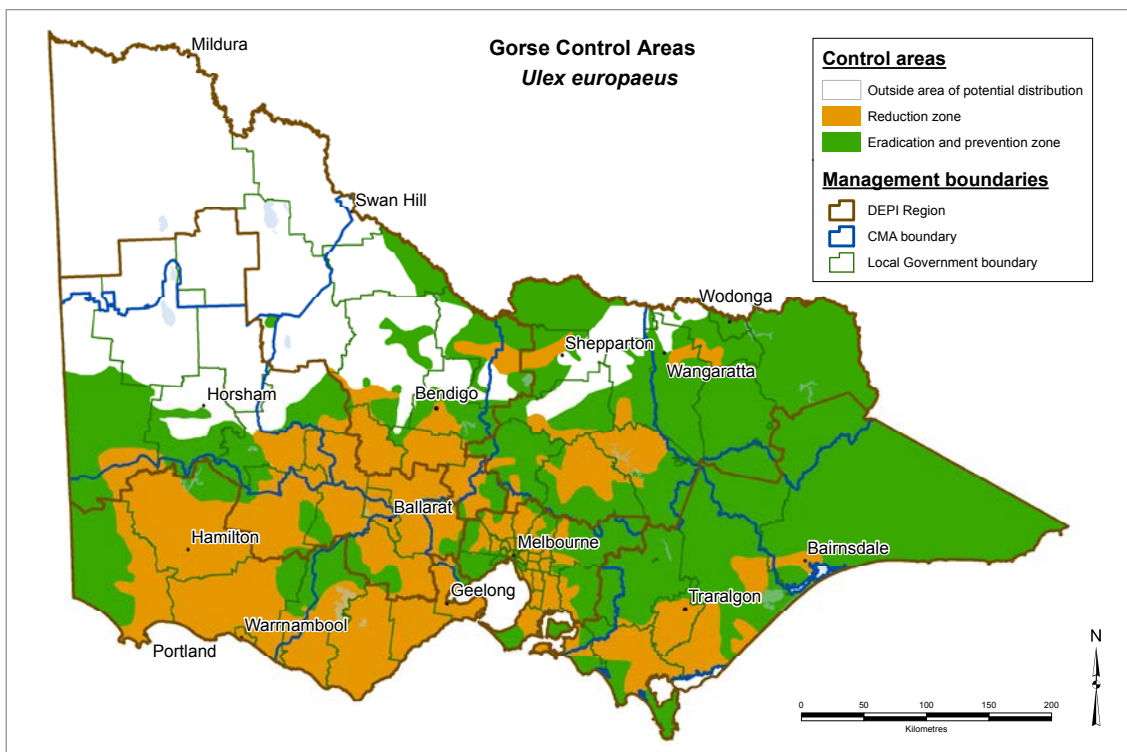


Figure 1: Victoria's gorse control zones. (DEPI, 2014)

On-Ground Gorse Control Projects 2013/14



The taskforce has supported the implementation of these projects to help communities build successful control programs in their local areas. The aim for these projects is to increase landholder awareness and ownership of the problem so that long term control can be achieved.

The taskforce actively promotes the implementation of a Community Led Approach to the management of this widespread pest. This is where a collective of concerned community members have come together to take action towards achieving successful control. Local communities have formed small groups to guide the planning and implementation of these projects. The Victorian Gorse Taskforce has supported these projects by providing resources for their implementation.

Facilitated 'Action Group' Projects

This approach is about placing a greater emphasis on voluntary compliance for gorse management rather than regulatory enforcement. Through these projects Project Officers are encouraging landholders to sign up to long term voluntary management agreements recognising that successful gorse control involves a commitment over many years. Where this Community Led Approach fails to convince landholders of their obligations to control gorse, Department of

Environment and Primary Industries (DEPI) compliance is then recommended so that the sustained action of the majority of landholders is supported.

The projects that were supported by the VGT in 2013/14 assist in implementing the goals and strategies found within the Victorian Gorse Control Strategy 2014-2019. These projects also work to prevent gorse from impacting upon important environmental and agricultural assets.

Staffordshire Reef Gorse Action Plan

VGT Contribution for 2013/14	Other contributions	Voluntary management agreements signed with landholders / approx. hectares of control	Project Partners
\$28,250	\$20,000	14 / 12ha	Woody Yaloak Catchment Group, Private Landholders, Golden Plains Shire

Nearest town: Staffordshire Reef

This project is part of a long term plan to remove gorse from an area around Staffordshire Reef. A gorse area plan was developed in 2012, initiated by a group of landholders who had already undertaken previous control work. The current plan encompasses approximately 100 parcels of land. The focus area is properties on both sides of Strickland and Staffordshire Reef Roads from Newtown through to Staffordshire Reef.

The project commenced in November 2013 and initially involves 14 landholders, many of which are conducting gorse control for the first time. These landholders have all signed up to long-term voluntary management agreements.

As at July 2014 this project is approximately half completed. Initial contact was made across approximately 100 parcels of land.

There is growing momentum in this project to continue with a further phase of the Staffordshire Reef plan in coming years.



Gorse infestation amongst native bushland treated by herbicide application.



Gorse infestation under agreement for control as part of this project.

Snake Valley Gorse Action Group

VGT Contribution for 2013/14	Other contributions	Voluntary management agreements signed with landholders / approx. hectares of control	Project Partners
\$25,000	\$25,000	65 / 25ha	Pyrenees Shire Council, Private landholders, Snake Valley Landcare Group, Upper Mount Emu Creek Landcare Network

Nearest towns: Snake Valley, Carngham

The Snake Valley Gorse Action Group coordinates a large project encompassing town, small rural and agricultural landholders.

The project kicked off during May 2013 with a community meeting held at the Snake Valley Hall. Approximately 30 people were in attendance and all were given an opportunity to contribute to the direction of the project. Community members were invited to serve on a steering group. The steering group with support from the taskforce has successfully coordinated the project into a sound position.

Around 500 landholders were contacted by letter to introduce the project activities. During this start-up phase the Pyrenees Shire Council assisted with the bulk mail-out and began to complete roadside control measures within the project area providing the project with some immediate results.

A Project Officer has negotiated 3 year voluntary management agreements with landholders for the control of gorse. As at July 2014, 65 of these agreements are in place. This Project Officer will continue to work with landholders into 2015/16 with the aim of adding to this tally and supporting landholders that have signed up with technical advice and access to incentives.



Gorse infestation under agreement for control as part of this project.

Inverleigh Teesdale Gorse Action Group

VGT Contribution for 2013/14	Other contributions	Voluntary management agreements signed with landholders / approx. hectares of control	Project Partners
\$25,000	\$25,000	12 / 20ha	Golden Plains Shire Council, Private landholders, Geelong Landcare Network

Nearest towns: Inverleigh, Teesdale, Bannockburn

This Gorse Action Group has been established in partnership with the Geelong Landcare Network. Following planning meetings in July 2013 the project was launched in September with a Field Day event held at 'Woolbrook' in Teesdale. The main areas of interest are along Native Hut creek (south of Teesdale) and Bruce's Creek (south of Bannockburn). 220 properties are contained within the project area with gorse infestations existing on waterways and drainage lines. A local steering group has been established to guide project activities that consists of Landcare members, a local landholder and a representative from the Golden Plains Shire. The Shire have been actively controlling gorse infestations.

A bulk mail out within the project area was completed with assistance from the Golden Plains Shire. As at July 2014, 22 properties have been visited by an experienced project officer engaged as part of the project. This project officer has offered management advice to these landholders and has facilitated the signing of 12 five-year voluntary management agreements for the control of gorse. Some large landholders were found to have significant areas of infestation so this program has been flexible enough to allow them to complete costly works in stages within the life of their management agreements. The project will continue to operate into 2015.



Gorse infestations under agreement for control as part of this project.

Napoleons Garibaldi Gorse Action Group

VGT Contribution for 2013/14	Other contributions	Voluntary management agreements signed with landholders / approx. hectares of control	Project Partners
\$25,000	\$15,000	28 / 27ha	Private landholders, Napoleons/Enfield and Garibaldi Landcare Groups, Leigh Catchment Group, City of Ballarat, Golden Plains Shire Council



Gorse control by mulching, before.



Gorse control by mulching, after.

Nearest towns: Napoleons, Garibaldi, Scotchman's Lead

There are approximately 120 properties in the target area which was set in consultation with a steering group consisting of members of both Garibaldi and Napoleons/ Enfield Landcare Groups, the Leigh Catchment Group and the Gorse Taskforce. The properties are split on either side of the Yarrowee River valley as it flows south of Ballarat between Golden Plains Shire and City of Ballarat. The majority of landholders have lifestyle properties and a small number of broad acre farms also exist in the project area.

A Project Officer has successfully negotiated 28 three year voluntary management agreements with landholders for the control of gorse. This has resulted in substantial on-ground gorse control throughout the project area. The City of Ballarat and the Golden Plains Shire Council have been actively supporting the project by assisting with mail outs and completing roadside control where possible. This project will move into its second year of operation during 2014/15.

Miners Rest Gorse Action Group

VGT Contribution for 2013/14	Other contributions	Voluntary management agreements signed with landholders / approx. hectares of control	Project Partners
\$25,000	\$19,000	17 / 9ha	Private landholders, Miners Rest Landcare Group, Upper Mount Emu Creek Landcare Network, City of Ballarat

Nearest town: Miners Rest

This project covers a large population of mixed sized properties from house blocks and lifestyle properties through to large farms. Approximately 270 properties have been identified from Sulky through to Miners Rest. With assistance from the City of Ballarat a bulk mail-out has been completed that served as an introduction to the project for landholders in the area.

Infestations throughout this area are common with heavy patches along Burrumbeet Creek, Olliers Rd, Millers Rd and an old quarry site. The region to the north east of the target area contains 5-20 acre lifestyle properties and with gorse infestations common throughout.

The project has the services of a dedicated Project Officer who is busy negotiating 3 year voluntary management agreements, providing access to incentives where available and offering technical advice to landholders.

The project is in its early stages and will continue into 2015/16.



Gorse infestations near Miners Rest treated via herbicide application.

Lal Lal Catchment Gorse Action Group

VGT Contribution for 2013/14	Other contributions	Voluntary management agreements signed with landholders / approx. hectares of control	Project Partners
\$25,000	\$27,500	0 / 0ha	Private landholders, Lal Lal Catchment Landcare Group, Moorabool Landcare Network, Moorabool Shire Council

Nearest town: Millbrook

The project aims to engage 50 landowners each year over the planned 3 year lifespan, including planning for follow up with revegetation of pasture or native species. In addition, an education program will be maintained stating that gorse is not an acceptable plant in the area and that “one year’s seeding means 25 years weeding”.

Gorse in the Lal Lal catchment is concentrated along fencelines, made and un-made roads, with significant infestations of gorse in paddocks. One of the challenges faced in addressing gorse across the project area is the number of absentee owners, and landowners for whom their land provides a secondary income.

Gorse has been identified by the Lal Lal Catchment Landcare group as the most significant weed in the area and this is supported by the Moorabool Landcare Network. Moorabool Shire Council also has identified gorse as a major weed and has a campaign to control the pest along roadsides and in reserves.

The area is a water catchment for Central Highlands Water and that organisation will provide in-kind support. VicRoads and VicTrack have easements through the area and have been requested to support the project with targeted spray campaigns.

All participating landholders will be encouraged to sign a 5 year gorse management agreement. Participants will be supplied with information about how to improve the quality and quantity of productive and biodiverse ground cover, to minimise the threat of gorse and other weed infestations. Participants will also be provided with information about how to access additional support through their Landcare group or network.

The project is currently in its early stages of implementation with a Project Officer appointed during July 2014.

Thompson Creek Catchment Gorse Action Project

VGT Contribution for 2013/14	Other contributions	Voluntary management agreements signed with landholders / approx. hectares of control	Project Partners
\$25,000	\$10,000	6 / 40ha	Private landholders

Nearest town: Freshwater Creek

This project has now moved into a 4th year of operation and during 2013/14 has focused on a total project area of approximately 10,000 hectares. The primary focus area is located along the upper reaches of Thompsons Creek, an area of high environmental value. Where necessary, gorse control is followed up with a neighbourhood rabbit control program, and in suitable locations, assisting the landholders in re-establishing an indigenous vegetation corridor along the creek. Working strategically from the upper to lower reaches of the creek has helped to prevent seed transfer downstream during flood events, and assist in preventing gorse infestation on previously clean land.

In 2013/14 the project involved 35 landholders, of these 6 are now signed up to 3 year Voluntary Management Agreements to control gorse on their properties. These landholders were offered a maximum incentive of 50% to help with implementation of their first year control works. Coordinating private landholder gorse control along with roadside control works undertaken by the Surf Coast Shire has been a successful partnership established within this project.

Staffing changes at the local project level has resulted in some delays to the delivery of further planned outcomes for this project. However this is now resolved and the project will continue to advise local landholders on appropriate methods of implementing a long term gorse control program on their property.



Gorse mulching at Freshwater Creek, before.



Gorse mulching at Freshwater Creek, after.

Moyne Weed Eradication Network

VG Contribution for 2013/14	Other contributions	Voluntary management agreements signed with landholders / approx. hectares of control	Project Partners
\$22,000	\$10,000	12 / 20ha	Private landholders, Basalt to Bay Landcare Network, Moyne Shire Council

Nearest towns: Caramut, Woolsthorpe

The Moyne Weed Eradication Network is a volunteer organisation comprised of representatives from the St Helens Landcare Group, The Basalt to Bay Landcare Network and Moyne Shire Council. The gorse effort has progressed west to east across the catchments of the Eumarella, Shaw, and Moyne Rivers. In 2013/14 the project has moved into a new focus area of the Merri River catchment. The project has targeted the length of the Merri River catchment – over 440 properties.

During 2013/14 the project has:

- Negotiated 12 voluntary management agreements for properties in the project area and gorse works completed under these plans. These landholders were able to obtain financial assistance through this project to implement the first year control measures outlined in their plan.
- A further 9 properties have indicated that control works will be undertaken without the need for an agreement.
- Three parcels of Crown Land have been treated for gorse at same time as gorse on adjoining private land.
- 3 roadside gorse infestations in Moyne Shire located and treated by council.



Media release, October 2013

‘Small Grant’ Projects

The small grants program is designed so that smaller community based groups can be empowered to implement key gorse control projects in Victoria. The small grants program in 2013/14 funded 6 projects up to \$5,000 (GST exclusive) to support community-led action.

It is envisaged that this will be an annual program with project proposals being considered during the winter months so that they are approved and ready to go for the spring / summer months.

South Central Cairn Curran Gorse Project – Stage 3

(Proponent: Blampied – Kooroocheang Landcare Group)

VGT contribution for 2013/14	Other Contributions	Approx. hectares of control
\$4,900	\$4,200	14

Nearest town: Smeaton

The South Central Curran Catchment Gorse Project Stage 3 is a continuation of a previous gorse project managed by the Blampied – Kooroocheang Landcare Group.

The majority of landholders affected have water frontage to the Muddy Creek, Joyces Creek, Captains Creek, Middle and Little Middle Creek.

The project has made available a financial incentive for local landholders to complete control works,

this is based on a 50% cost share arrangement. The Landcare Group possesses a spray unit and this has been used to good effect within this project. Some property owners have also used commercial sprayers, as some of the infested areas are very steep (escarpment) and some owners are elderly. A particular focus has been engaging with newly arrived landholders within the Landcare Group region, as a result they have shown keen interest to tackle gorse infestations on their properties.

Bass Coast Gorse Action – Grantville

(Proponent: Bass Coast Landcare Network)

VGT contribution for 2013/14	Other Contributions	Approx. hectares of control
\$2,240	\$3,620	15

Nearest towns: Grantville, Bass

The Bass Coast Landcare Network and partner organisations have been working toward treating the remaining gorse infestations around Grantville. Some significant control works from 1990 through to the present day have eliminated many infested areas across the Network’s area of interest.

However approximately 15 hectares of thick to scattered infestations around Grantville required treatment. This project recruited 5 properties to the Network’s control effort. These properties were the last with significant gorse infestations in the district.

Bass Coast Gorse Action – Phillip Island

(Proponent: Bass Coast Landcare Network)

VGT contribution for 2013/14	Other Contributions	Approx. hectares of control
\$2,490	\$3,000	15

Nearest town: Smith's Beach

This project recruited 5 properties to the Network's control effort. These properties are the last with significant areas of untreated gorse infestations on Phillip Island.

This project also facilitates an awareness campaign in the area supported by organisations and project partners such as the Phillip Island Nature Parks, VicRoads and the Bass Coast Shire

Council. These organisations control their own gorse infestations or engage the Bass Coast Landcare Network as contractors to undertake the work.

The Phillip Island Nature Parks in particular are keen to reduce gorse cover across the Island as it provides habitat for foxes, who in turn threaten important fauna such as Penguins and Shearwaters.

Stanley Landcare Gorse Control Project for Private Landholders

(Proponent: Stanley Landcare Group)

VGT contribution for 2013/14	Other Contributions	Approx. hectares of control
\$5,000	\$6,950	10

Nearest town: Stanley

The Stanley Landcare group project has assisted private landholders to treat isolated gorse infestations. The group has engaged 15 individual landholders in the program and supported them to develop long term management plans and implement control measures following National Best Practice methods. Another core part of this project has been to improve education of landholders in the area about gorse and the

impacts it has on the local environment, many of the properties are smaller lifestyle landholders with little agricultural knowledge.

This work will also aid in protecting local walking trails, maintaining access to properties in case of emergencies and the local township of Stanley. As part of the project those participating in the project have had infestations mapped to enable improved future monitoring.



Foundations for the Future – Targeting Isolated Infestations along the Dry Creek

(Proponent: Sunday Creek Dry Creek Landcare Group)

VGT contribution for 2013/14	Other Contributions	Approx. hectares of control
\$5,000	\$5,000	9

Nearest town: Kilmore

This project has enhanced the existing gorse control strategy within the catchment, focusing on properties along the Dry Creek between Kilmore East and Broadford. This section of the catchment has demonstrated considerable improvement over recent years.

Seventeen properties were identified for action along the 7.5 kilometre waterway length. Typical infestations were scattered, with some medium density sections on private land. Gorse control initiatives were applied on a \$1:\$1 basis, and all landholders agreed to voluntarily undertake the required follow-up works. Revegetation programs will be considered again where appropriate.

Upper Hopkins – gorse control on private property

(Proponent: Upper Hopkins Land Management Group (UHLMG))

VGT contribution for 2013/14	Other Contributions	Approx. hectares of control
\$5,000	\$8,000	18

Nearest towns: Ararat, Beaufort, Tatyoon, Streatham, Wickliffe, Maroona, Willaura.

This project has built upon past on-ground efforts that the Upper Hopkins Land Management Group have coordinated. The focus has been on all major waterways in the Upper Hopkins catchment from Fiery Creek west of Beaufort to the Grampians. To date gorse has been largely controlled on Good Morning Bill, Dennicull, Billy Billy, Jacksons, Charleycombe, Captains Creek and the Hopkins River. In addition to continuing gorse control along

waterways this project has focused upon controlling gorse found on private land adjoining roadsides that are being included in the Ararat Rural City Council roadside gorse control program. This funding has offered assistance to farmers who are approached by the Department of Environment and Primary Industries (DEPI) to control gorse on their property. The project area contains 23 properties and covers approximately 1,000ha. Seventeen landholders in this area were asked to control gorse on their property and all completed the work required.

Income and Expenses

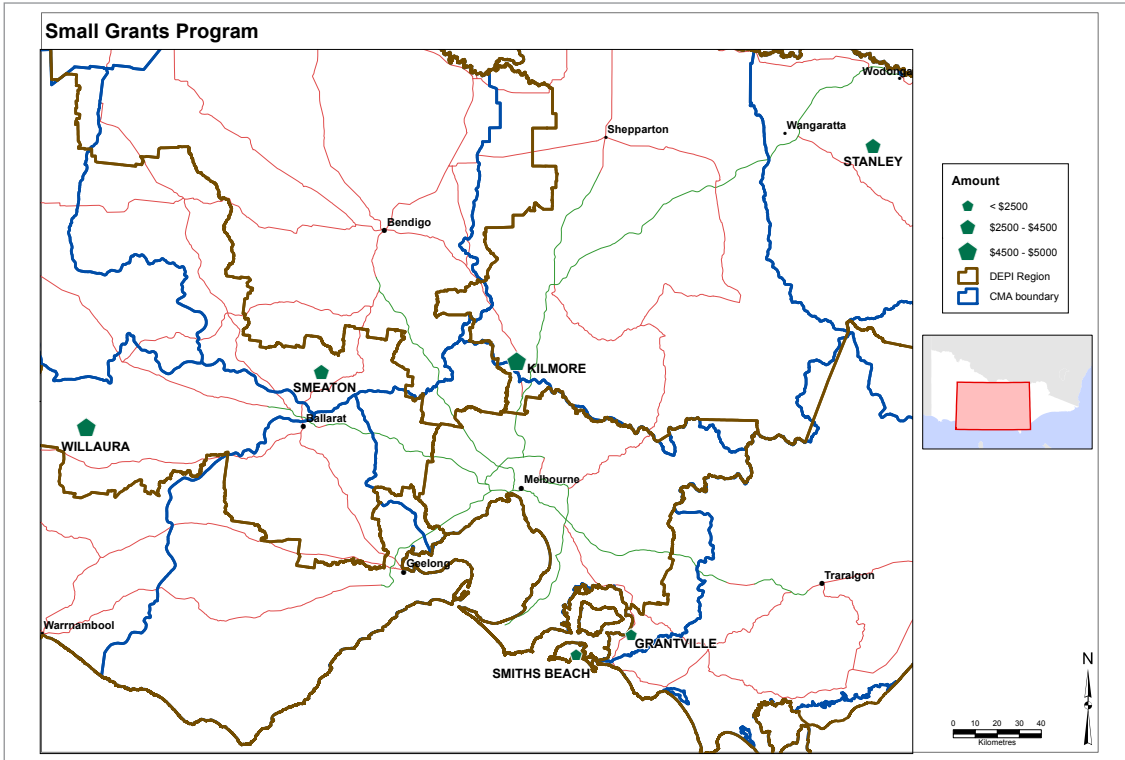


Summary of VGT income for 2013/14:

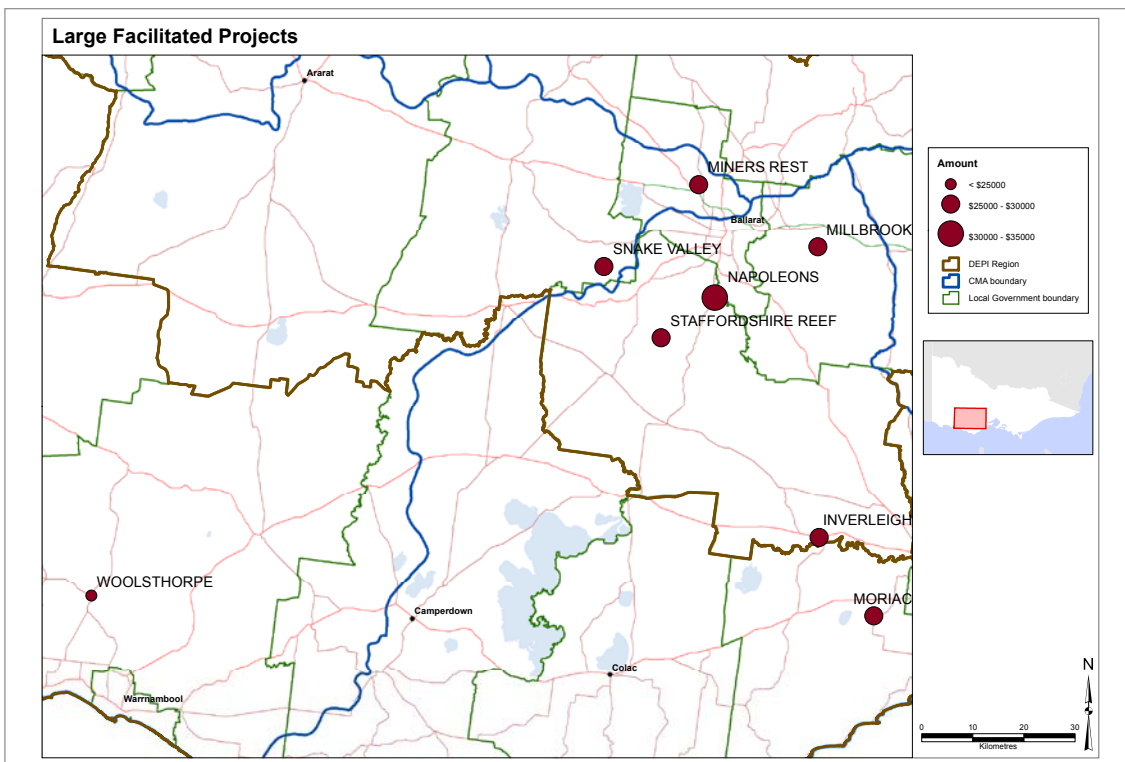
Amount	Source
\$130,000	Victorian Government, Department of Environment and Primary Industries

Summary of VGT expenses for 2013/14:

Amount	Expense
\$60,000	Employment of the VGT Executive Officer through the Department of Environment and Primary Industries
\$224,880	On-ground projects



Small-scale projects funded by the VGT during 2013-14



Facilitated 'Action Group' projects funded by the VGT during 2013-14

Appendix



2013/14 VGT Members

Nigel Ainsworth	Department of Environment and Primary Industries
Jenny Blake	Golden Plains Shire
David Clark	Upper Mount Emu Landcare Network
Ron Cosgrave	North Central CMA, Natural Resource Management Committee
Doug Dalglish	Newham and District Landcare Group
Peter Everist	VGT Chair – Haddon Landcare Group / Woody Yaloak Project
Singarayer Florentine	University of Ballarat
Martin Forbes	Dales Landcare Group / Woody Yaloak Project
Peter Forster	Upper Hopkins Land Management Group
Margaret Hatton	Sunday Creek / Sugarloaf Sub-Catchments Inc
Nicole Garfi / Shane Herbertson	Executive Officer
Brian Rowe	Blampied-Kooroocheang Landcare Group
Robert Watson	Leigh Catchment Group / Napoleons-Enfield Landcare Group



